

INSTALLATION *guide*

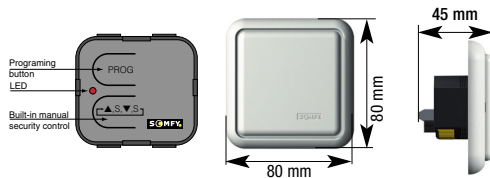
Ref.5006405A



inteo **DRY CONTACT TRANSMITTER**

The **DRY CONTACT TRANSMITTER** is a RTS control that can be controlled driven by a key switch, a paddle switch, a Centralis IB or a dry contacts rain sensor. The UP or DOWN radio commands are achieved when the UP or DOWN inputs (▲ ▼) are connected with the common input (C). The STOP command is achieved when the three inputs (▲ ▼ C) are connected together.

1 Characteristics



- Supply : 220-240V 2,5A 50/60Hz
- Fuse : 3,15A
- Transmission timing : min0,5 sec. max10 sec.
- Frequency : 433.42 MHz
- Protection index : IP30
- Temperature : +5°C to +40°C
- Class II product



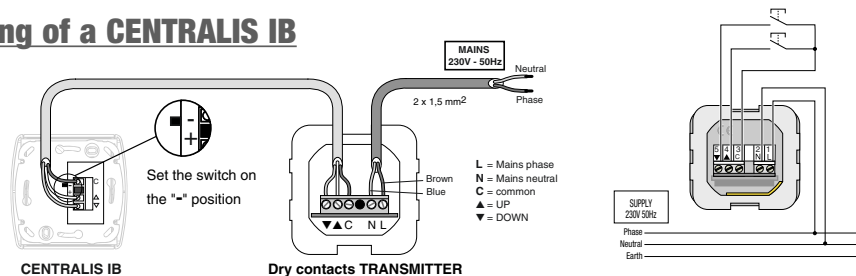
Hereby, SOMFY, declares that this equipment is in compliance with the essential requirements and other relevant provisions of Directive 1999/5/EC. A Declaration of Conformity is available at the web address www.somfy.com Heading CE

usable in EU, (CH)

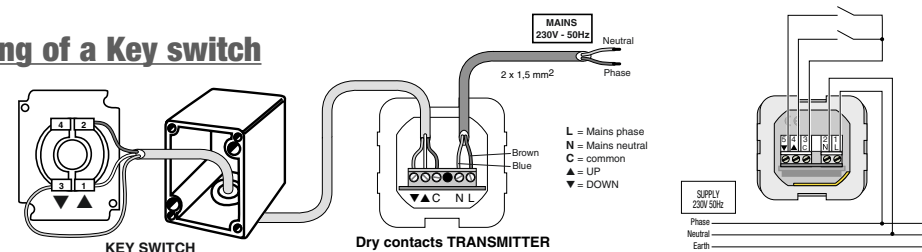
2 Installation

This device must be installed and programmed by qualified installers for whom this instruction is intended. Before connecting the unit, read the instructions carefully.

Cabling of a CENTRALIS IB



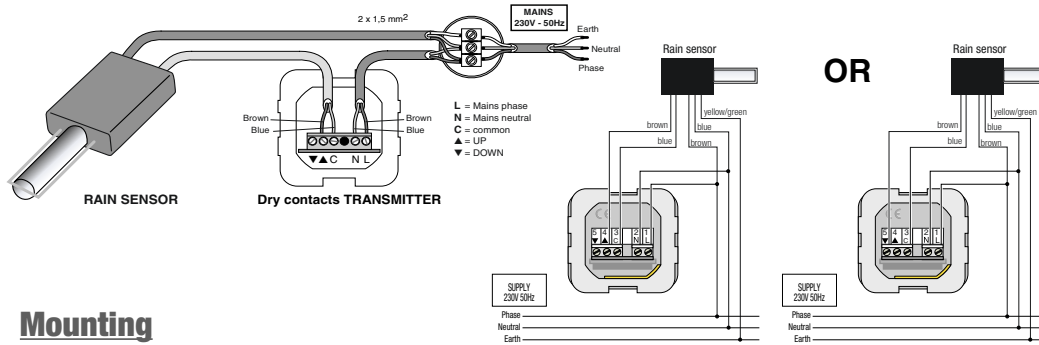
Cabling of a Key switch



We reserve the right to make changes due to technical improvements.

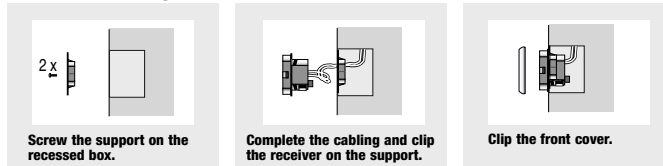
DRY CONTACT TRANSMITTER **SOMFY**

Cabling of a rain sensor

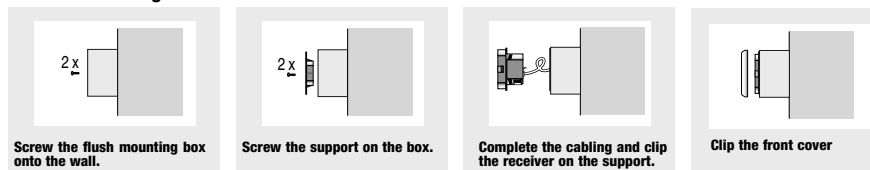


Mounting

RECESSED mounting



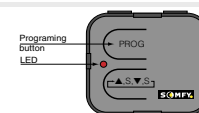
SURFACE mounting



3 Programming

A INITIAL INSTALLATION To record the first DRY CONTACT TRANSMITTER

- Set the RTS receiver in its programming mode (refer to the relevant instruction guide).
- Press the programming button on the frontside of the **DRY CONTACT TRANSMITTER RTS** until the reaction of the RTS receiver (blinking of a light or movement of the end-product). The address of the transmitter is memorized by the RTS receiver which automatically quits its programming mode.



B EXISTING INSTALLATION To add a new DRY CONTACT TRANSMITTER

- Press more than two seconds on the programming button of a RTS transmitter already memorized in the RTS receiver in order to "wake up" the receiver.
- Record the new control by pressing the programming button on the frontside of the transmitter until the reaction of the RTS receiver (blinking of a light or movement of the end-product). The address of the transmitter is memorized by the RTS receiver which automatically quits its programming mode.

C DELETE A DRY CONTACT TRANSMITTER

Carry out the same procedure as described in **chapter 3A** :
Set the RTS receiver in its programming mode, then press the prog button of the transmitter you wish to delete.